

Sustainable Fairfax

Climate Education Community



Bringing the Community Together

Community Chats



- Welcome!
 - Thank you to Casey Fritz, MSS schools & community Recycling coordinator
- Minimizing the waste we generate, how to recycle RIGHT,
- How to protect workers and minimize our impacts
- Resources – SFX and Where does it Go Joe
- Your stories, questions, comments...
- Quick introductions



Sustainable Fairfax

Climate Education Community

How we get the work done



ZERO WASTE



CLIMATE ACTION NOW



Getting to our Roots

GETTING TO OUR ROOTS



FILM & SPEAKER SERIES



COMMUNITY EVENTS

Why recycle and compost?

WHAT ARE YOU SENDING TO THE LANDFILL?



*Data is from a 2014 Marin Sanitary Service Waste Characterization Study

Why is it important to recycle?

Our materials come from natural resources, most of which are non-renewable! One of the main environmental benefits of recycling is to reduce the need for extraction of natural resources



More paper! 5-7 times; look for recycled content!



More glass, infinitely, in as little as 30 days



More aluminum, infinitely, in as little as 6-8 weeks



Generally downcycled: fleece, carpets, toys

Why does MSS have dual-stream recycling?



Our trucks are designed to match our dual stream recycling system – fiber (paper and cardboard) is kept separate from containers to prevent contamination from food, liquid, and glass.

RECYCLING CLEAN PAPER PRODUCTS ONLY



UNWAXED CARDBOARD & PAPERBOARD



NEWSPAPER & MIXED PAPER

Because we keep clean paper products separate from bottles and cans, it stays clean and dry enough that right now we can still sell to China (very uncommon right now)



NO

PLASTIC BAGS
CARTONS
GLASS
COATED PAPER



DO NOT BAG RECYCLABLES

Marin
SANITARY SERVICE
CONSERVATION — OUR EARTH, OUR MISSION, OUR JOB
www.marinsanitaryservice.com

RECYCLING CLEAN BOTTLES, CANS & CONTAINERS ONLY



NO
PAPER ITEMS
PLASTIC BAGS
COMPOSTABLE PLASTICS
CLAMSHELLS / STYROFOAM



Marin
SANITARY SERVICE
CONSERVATION — OUR EARTH, OUR MISSION, OUR JOB
www.marinsanitaryservice.com

Why have we so drastically reduced the plastics we will take in the recycling?

Important to remember that recycling is a market! Just because you can sort it, doesn't mean you can sell it to a reliable recycler.



US is exporting Plastic waste!

Waste exported for RECYCLING is incinerated, dumped, or disposed in open landfills

Malaysia - 55%
Indonesia - 81%
Vietnam - 85%.
} mismanaged

The US sends 1 million tons of plastic waste overseas every year.

“Experts estimate that 20% to 70% of plastic entering recycling facilities around the globe is discarded because it is unusable.”— this is why MSS takes only the plastics we know have value and will be recycled. We are still able to sell to China.



Plastic waste on a beach in Cambodia. Photo and graphic are from the article “Where does your plastic go? Global investigation reveals America’s dirty secret” by *The Guardian*.

Only about 30% of plastic ever produced is still in use — the rest has been disposed of in one of three ways:

Plastic also persists in our environment for 400-1000+ years before it starts to break into smaller pieces. The best thing we can do with plastic is use less of it.

Plastic recycling is not “closed-loop”, meaning it does not reduce the need for use of virgin plastic. This is due to “downcycling”.



Graphic is from *The Guardian*'s article “Humans have made 8.3bn tons of plastic since 1950. This is the illustrated story of where it's gone”



Over time, humans have discarded more than **6.3 billion metric tons** of plastics — and one way or another, we're still living with nearly all of it.

MSS's Organics Diversion Programs: ing

COMPOSTABLES



NO
PLASTIC BAGS
DIAPERS
PET WASTE
COMPOSTABLE PLASTICS



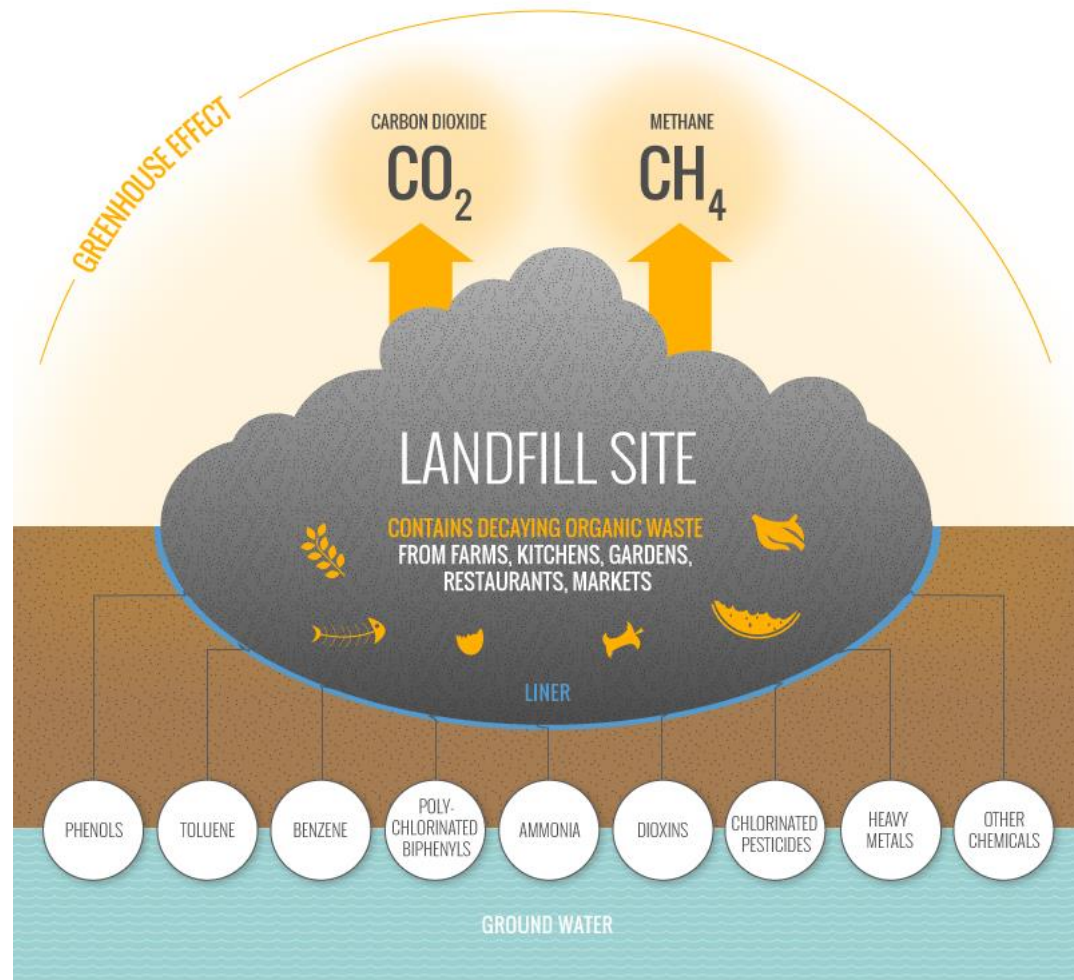
DO NOT BAG RECYCLABLES

Marin
SANITARY SERVICE
CONSERVATION — OUR EARTH. OUR MISSION. OUR JOB
www.marinsanitaryservice.com



MSS's Organics Diversion Programs

- ❖ Residential/commercial compost program –
- ❖ Food2Energy Program
- ❖ What happens when organic material is sent to the landfill?



What are bioplastics?

Why they are NOT recyclable OR compostable?

- Bio-based plastics use plants to turn into similar polymer used to make the plastic
 - It behaves exactly the same way as regular plastic, but didn't use fossil fuel
- Biodegradable plastics supposed to break down
 - Often, they take much longer than food, plants, and dirty paper to break down and get removed from facilities that do accept them
 - Bioplastics behave very similarly to regular plastics in the environment
 - Marin's composter is certified organic and has stricter standards to meet for higher quality compost

CUPS, STRAWS & UTENSILS						
PRODUCT	STANDARDS & CLAIMS	ENVIRONMENTAL PERFORMANCE				
		New	6 mo. on land	12 mo. on land	24 mo. on land	24 mo. in the sea
 Eco Products Cold Cups	Compostable BPI certified, made from corn					
 Planet Compostable Hot Cups	Compostable. Made from Ingeo, a brand name for PLA.					
 Aardvark Paper Straws	Described as "Earth-friendly".					
 World Centric PLA Straws	100% compostable, ASTM D-6400, EN13432. Breaks down in commercial compost.					
 Rossetto Cutlery	Compostable, natural materials.					
 Bio-Based Eco-Products PSM Cutlery	Made from 70% renewable resources. Not compostable.					

Landfill Materials

- ❖ What is “garbage” and where does it go?
 - Redwood Landfill
- ❖ We do not sort any of your garbage

GARBAGE

EVERYTHING PLACED IN YOUR GARBAGE CART GOES DIRECTLY TO LANDFILL



NO
RECYCLABLES
FOOD WASTE
HAZARDOUS WASTE



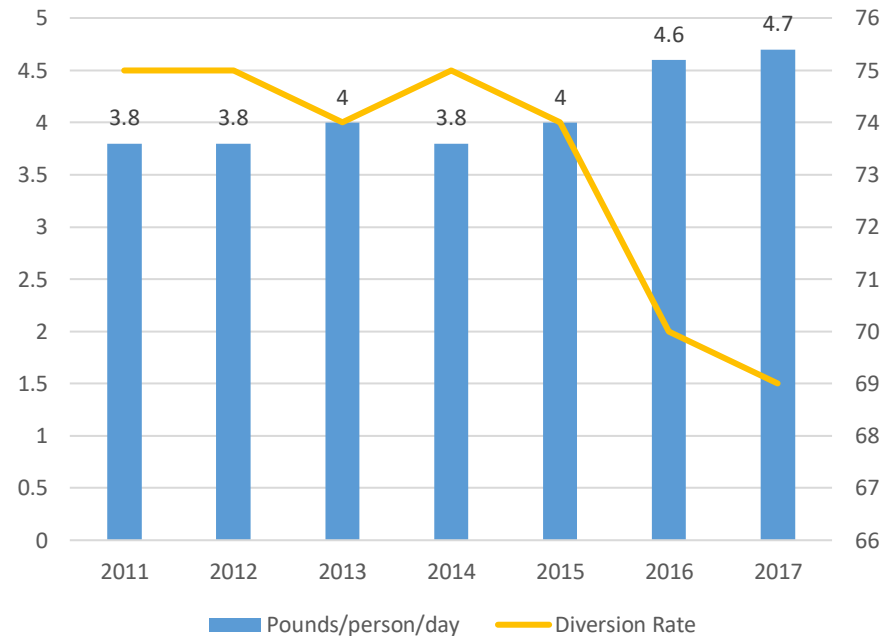
Marin
SANITARY SERVICE
CONSERVATION — OUR EARTH, OUR MISSION, OUR JOB
www.marinsanitaryservice.com

Marin County's Waste

- What is a diversion rate?
 - The amount of material we “divert” from landfill, or the proportion of waste that gets recycled and composted rather than thrown away
- Marin County's 2025 zero waste goal - ~95% diversion
- Marin County - amount of waste produced per person per day into landfills / and the percentage of waste diverted from landfills.

2011: 3.8 pounds per day / 75% diverted
2012: 3.8 pounds per day / 75% diverted
2013: 4 pounds per day / 74% diverted
2014: 3.8 pounds per day / 75% diverted
2015: 4 pounds per day / 74% diverted
2016: 4.6 pounds per day / 70% diverted
2017: 4.7 pounds per day / 69% diverted

Marin County Zero Waste Trends



Source: Zero Waste Marin

Taken from the *Marin IJ* article "Marin County losing momentum on zero-waste goal"

We Can do Better – It Matters!

Source Reduction

- ✓ Buy Less stuff
- ✓ Say no to online shopping
- ✓ Make purchasing decisions based on waste created
- ✓ Pay attention to your trash
- ✓ Focus on Food Waste Prevention!

Recycle Right

- ✓ Know what goes where
- ✓ When in doubt, throw it out

Compost Right

- ✓ Everything that was once living'
- ✓ NO compostables in trash or recycling

Resources

- ❖ [Where Does it Go Joe](#)
- ❖ casey.fritz@marinsanitary.com | 415-458-5539
- ❖ ZeroWaste Marin – Food Prevention Strategies
- ❖ Sustainable Fairfax | info@sustainablefairfax.org

Thank you!

Food Waste Prevention



Sustainable Fairfax
Climate Education Community

- Next Chat – *Putting a Plan in Place to Electrify Your Home*
- Join the ZeroWaste Committee – 3rd Tuesday/mo
- Check out the calendar for upcoming chats
- Become a member and Support our work for \$35
- Get involved – looking for Board Members and/or folks to help
- Stay local – Fairfax is Open for Business!
- See you next time!

THANK YOU TO OUR SPONSORS

